

MP2.2-Basic-AM-XOB09

- ① CCT °K ② beam ③ light control ④ finish ⑤ options

Electrical Specifications

class 2 constant current DC power supply required
 30.3 - 36.9V DC @ 350mA 11.9W BY OTHERS
 each fixture requires its own, dedicated driver
 "daisy chaining" fixtures is not permissible

**** INQUIRE FOR INTEGRAL DRIVERS ****

MP2.2 Basic Millwork

feed from side →

wiring and splices are accessible from the room after installation - rear access is only required during installation

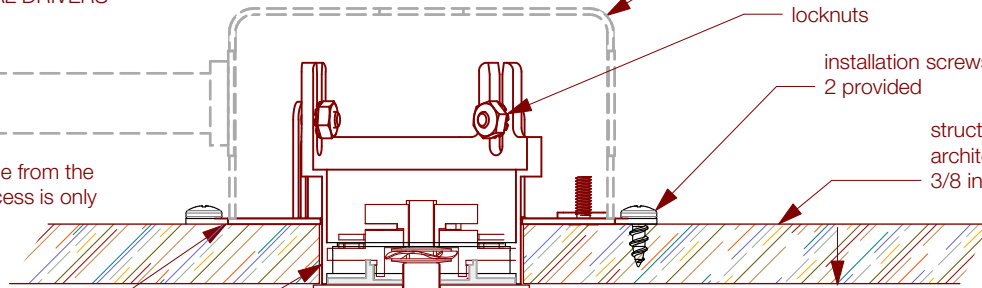
outlet box (by others)
 4 inch square steel 1-1/2 inch deep (min)
 2-1/8 inch deep recommended

locknuts

installation screws
 2 provided

structurally sound architectural millwork
 3/8 inch - 1 inch thick

Flush Mounting Kit
 BK1.9-TL-AM no.88101266
 one required at each mounting point



LED

Xicato XOB0995XX15X3621
 LES 09mm. 95CRI
 source lumens 1341 lm @ 350mA 3000K
 efficacy 113 lm/W 11.9W

4 Finishes

Paint - low gloss baked enamel
 WH white
 BK black
 BZ statuary bronze
 CP custom paint

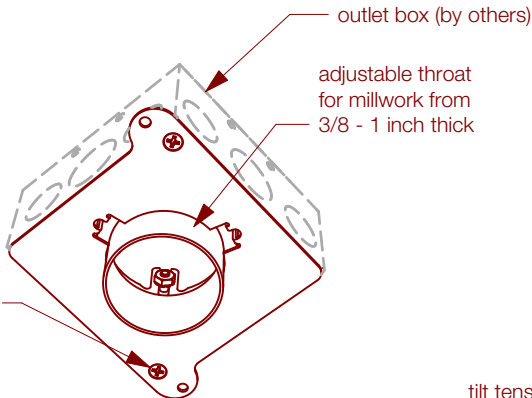
Brass
 hand worked metal and patinas
 BB burnished brass
 BP dark bronze patina
 VP variegated light patina
 VB vintage brass
 CB custom brass
 ** sealer request - add ** to code

5 Construction Options

L" stem length - specify length in inches
 A° ceiling slope fitting - specify angle in degrees
 90 90° tilt
 WL wet location
 WW wall washer
 FC flush cover 2.1" dia.



8-32 box screws provided



1 CCT °K

2700	3000	3500	4000
------	------	------	------

2

Beam reflector and solite lens

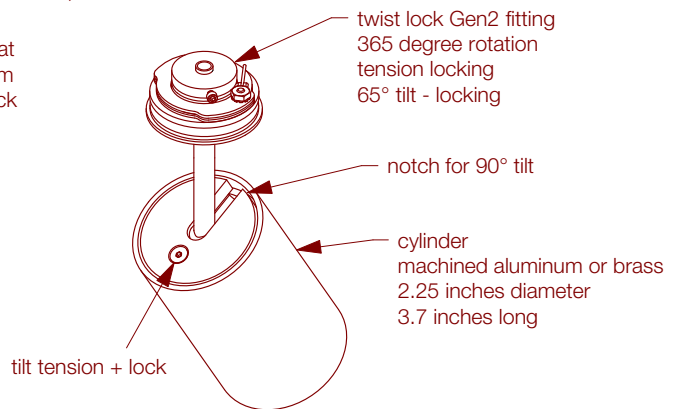
S spot	18.5°	883.3 lm	5410 cbcp
N narrow	28.8°	821.8 lm	2689 cbcp
M medium	37.9°	728.3 lm	1414 cbcp

photometry and IES files available

3

Light Control

HX Hexcel louver
 LS Linear spread lens - 55°
 AH 2 inch dia. accessories holder



Patent No. 7902459



Title 24 JA8 Approved

damp or dry locations - horizontal or vertical mounting

MP2.2 Photometry

Xicato XOB09 95 CRI

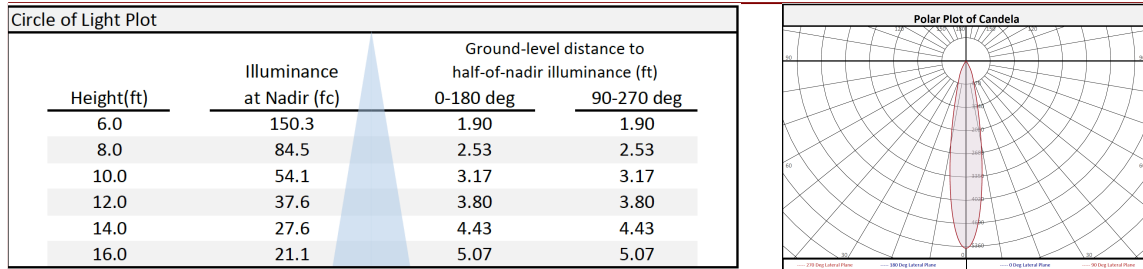
09mm LES 350 mA reflector + solite lens

spot - 18.5°

883.3 lm
delivered

5410 cbcp

LLIA002475-002

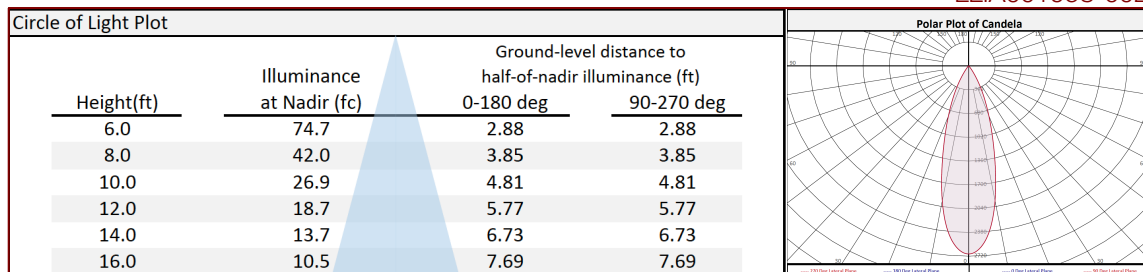


narrow - 28.8°

821.8 lm
delivered

2389 cbcp

LLIA001958-002

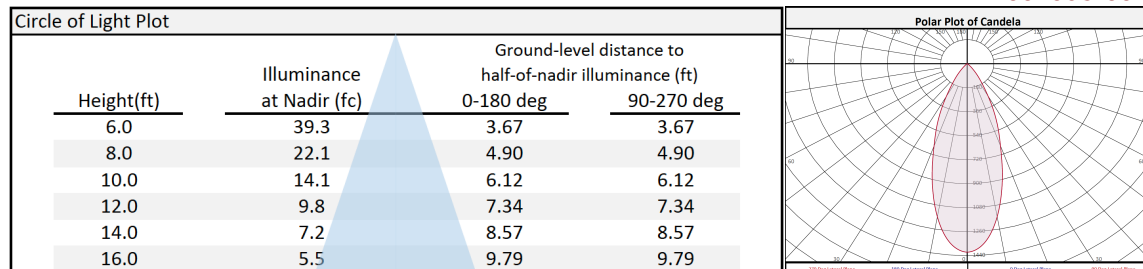


medium - 37.9°

728.3 lm
delivered

1414 cbcp

LLIA001958-001



spot = <20° narrow = 20°-30° medium = 30°-40° wide = >40°