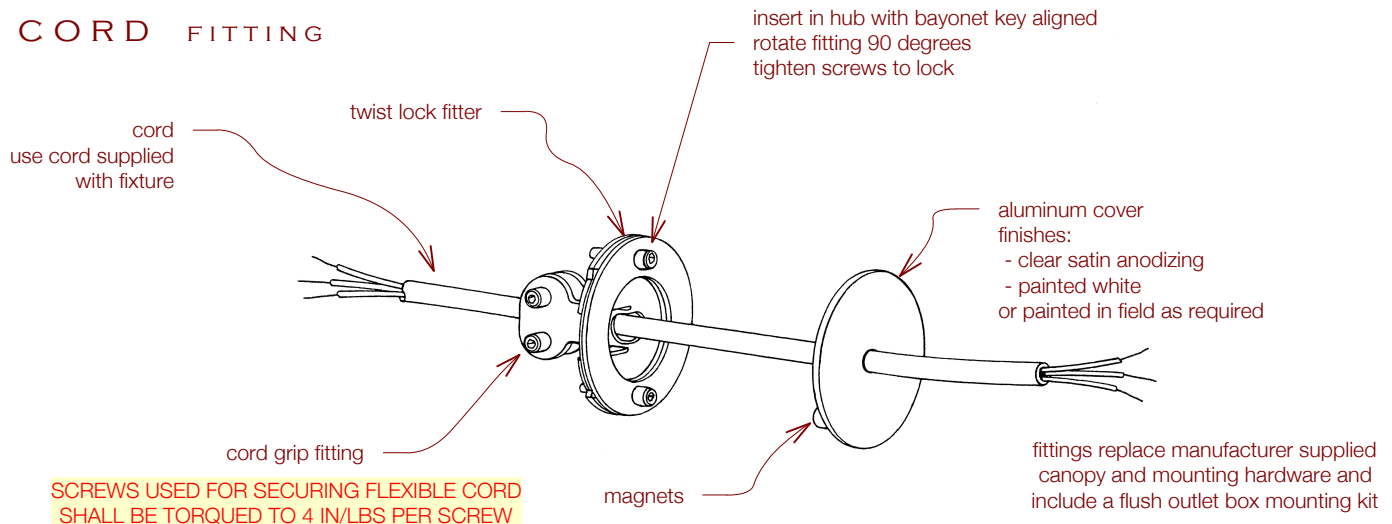


# Cable and Cord Fittings for Millwork

## C O R D F I T T I N G



model no. FF-CR-SV

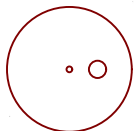
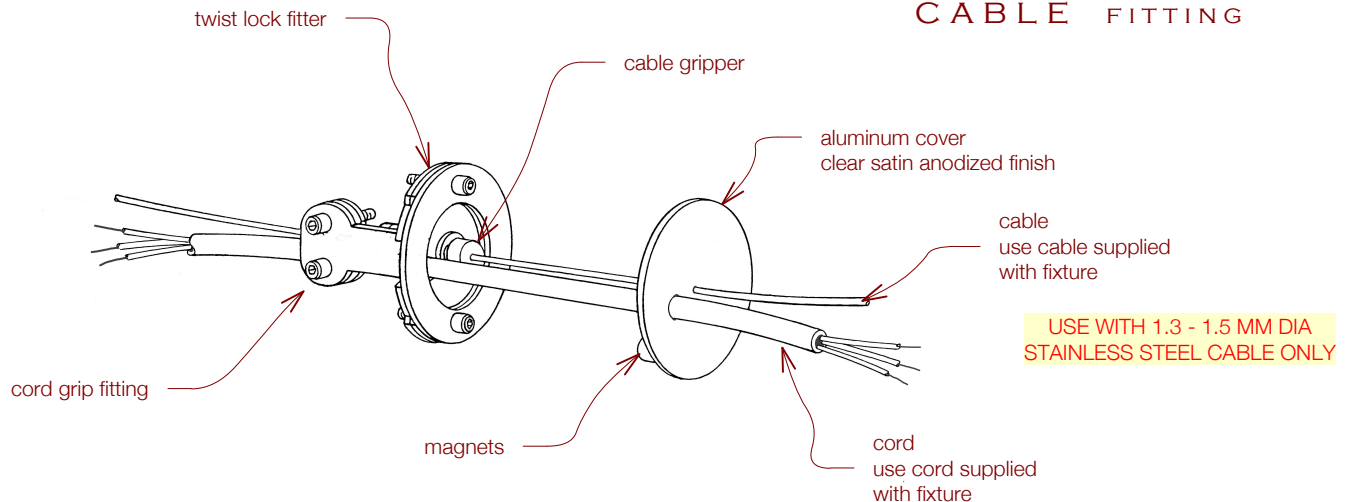
includes flush outlet box mounting kit  
18 gauge wire - 2 or 3 conductors  
diameter to .26" maximum  
fixture weight - 5 lbs max

model no. FF-CR-SJ

includes flush outlet box mounting kit  
18 gauge wire - 2 or 3 conductors  
diameter to .34" maximum  
fixture weight - 10 lbs max

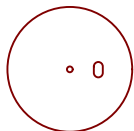
USE WITH LISTED AND C-UL OR CSA CERTIFIED, THREE CONDUCTOR 18 AWG, TYPE SVT OR SJT, OR TWO CONDUCTOR 18 AWG, TYPE SPT2 FLEXIBLE CORD ONLY  
FLEXIBLE CORD SHALL NOT BE SUBJECTED TO KINKS OR SHARP BENDS  
AND SHALL BE NOT-FOR-HARD-USAGE JACKETED TYPE IF SUPPORTING UP TO 2.3 KG (5 LBS)  
OR HARD-USAGE JACKETED TYPE IF SUPPORTING UP TO 4.5 KG (10 LBS)

## C A B L E F I T T I N G



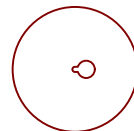
model no. FF-CB-RD

includes flush outlet box mounting kit  
cable + round cord  
SVT 18/3 power cord to Ø .27"  
3/64 inch - 1/16 inch cable  
fixture weight - 33 lbs max



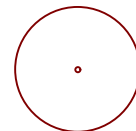
model no. FF-CB-FT

includes flush outlet box mounting kit  
cable + flat cord  
flat power cord to .14" x .24"  
3/64 inch - 1/16 inch cable  
fixture weight - 33 lbs max



model no. FF-CB-SO-RD

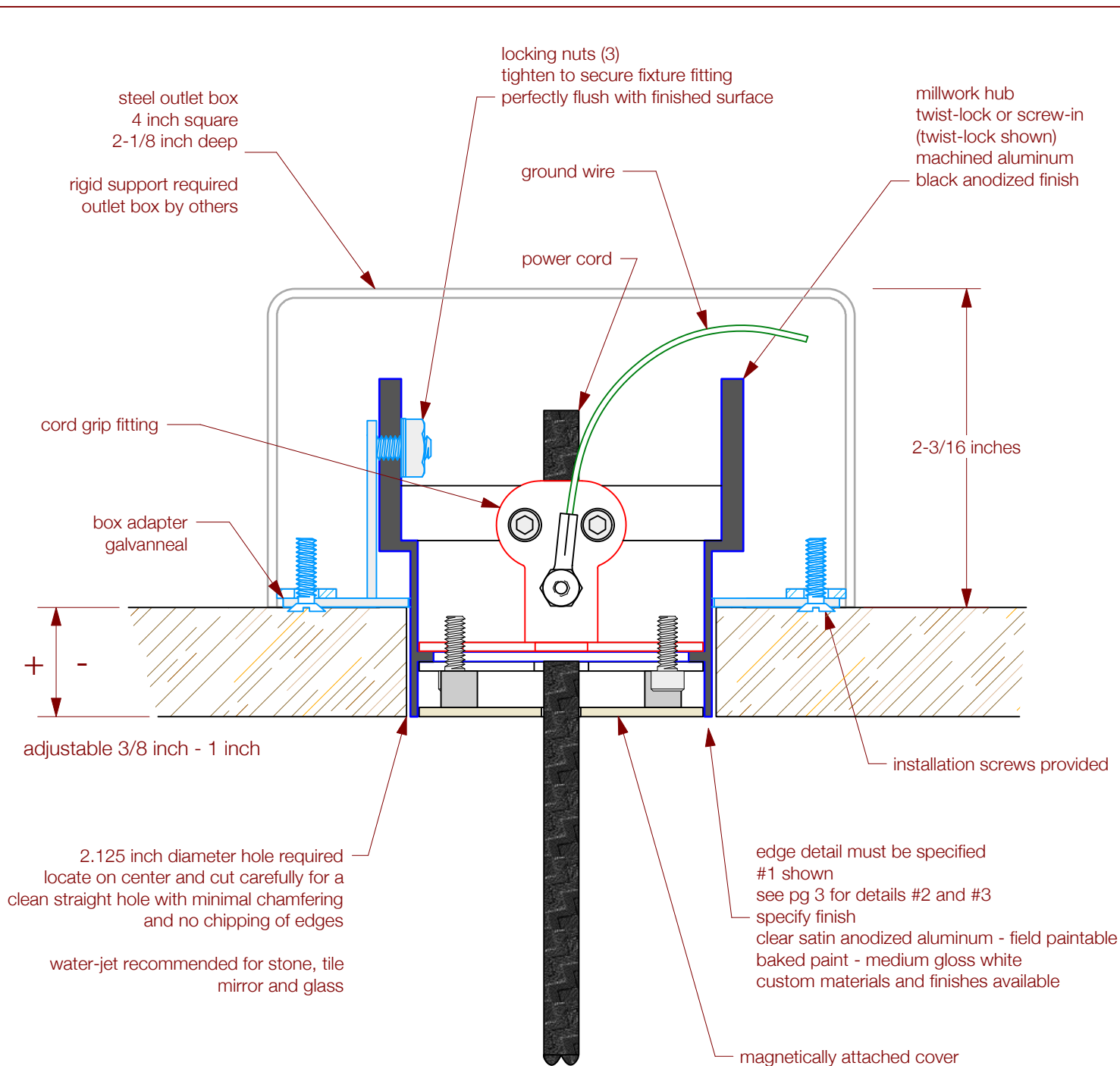
includes flush outlet box mounting kit  
cable + cord - single outlet  
power cord to Ø .24"  
cable to 1/16 inch  
fixture weight - 33 lbs max



model no. FF-CB

includes flush outlet box mounting kit  
cable only - no cord  
3/64 inch - 1/16 inch cable  
fixture weight - 33 lbs max

UL Listed - Patent No. 7902459



### Installation

1. attach box adapter to outlet box with provided screws
2. rigidly support outlet box
3. pull millwork hub out until the front edge is flush with the adjacent finished surface or as required for cover detail (see options)
4. using a 1/4 inch drive ratchet with an 11/32" socket reach into the box and tighten the keps nuts to secure in position
5. use provided masking plug to close off and protect interior until finishing is complete and/or ready to install the fitting
6. install twist-lock fitting according to instructions

### Millwork Mounting Kit Installation Guide

for horizontal or vertical applications  
in tile, wood, stone, metal  
and other solid mounting surfaces

UL Listed - Patent No. 7902459

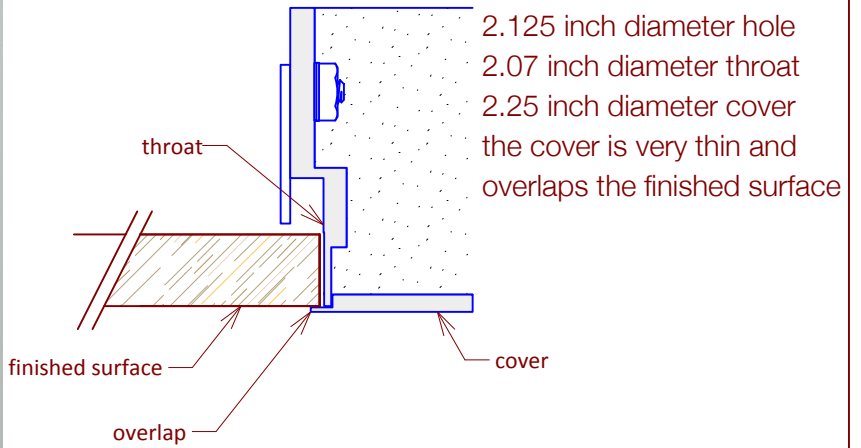
mounts to 4-inch square steel outlet box - 2-1/8 inch deep box recommended - rigid support required

# Millwork Edge Details

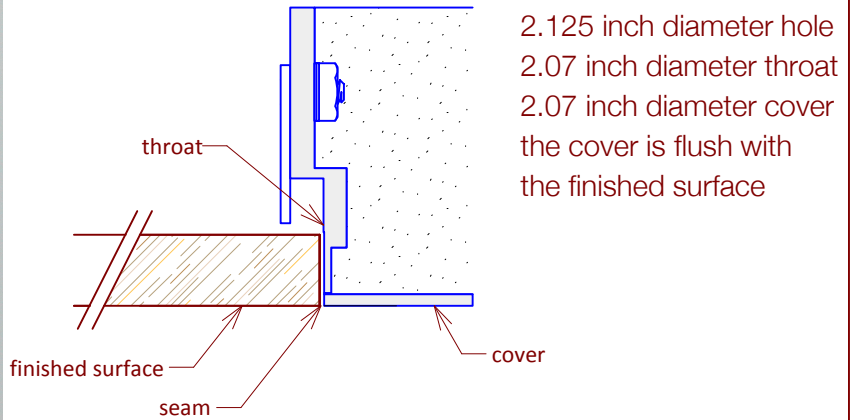
consider material, finish and workmanship when specifying edge detail

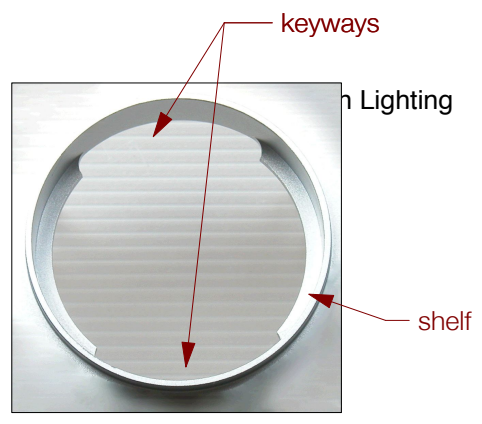
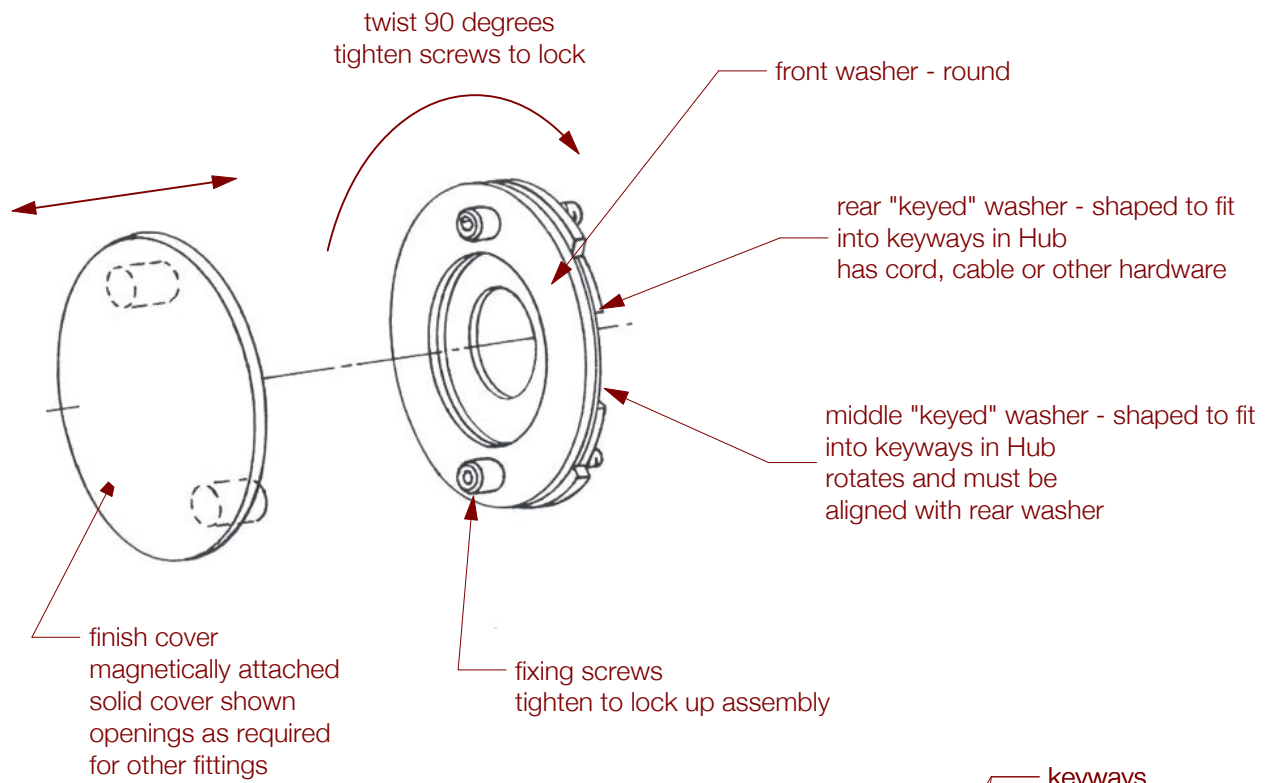


### Overlap Trim - Detail #2

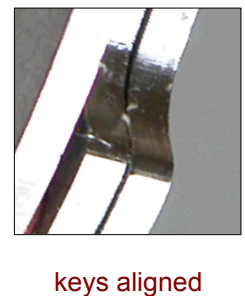
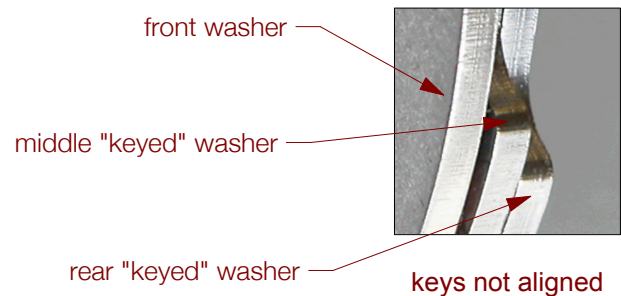


### Flush Trim - Detail #3





Twist Lock Hub



keys must be aligned in order for the twist lock fitting to seat on the shelf of the hub and be installed properly

Twist-lock Fitting Installation Guide and Notes

UL Listed - Patent No. 7902459